

MODEL 79 series

**FULL-FUNCTION, PRECISION WELD HEADS
WITH OR WITHOUT FILLER WIRE**

AMI
ARC MACHINES, INC.®

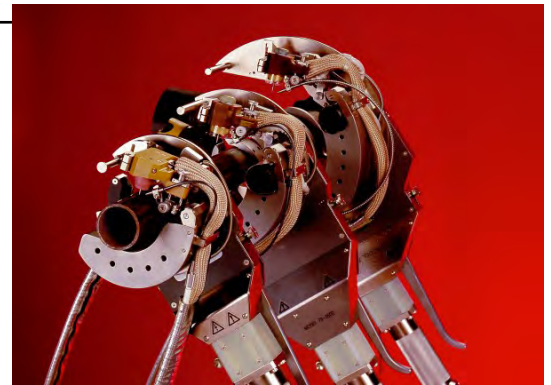
The widest range of orbital welding equipment in the world



The Model 79 series of high durability, “full function” weld heads are designed for fabrication shop and field process pipe welding applications. The Model 79 weld heads have a unique integral clamping system which gives each weld head the ability to adjust for different pipe and tubing diameters in seconds, thereby eliminating the requirement for specific sized guide rings. The M79 weld head series can accommodate a range of pipe sizes from 0.75” OD to 6.625” OD (19 mm to 170 mm) and wall thicknesses up to 0.75” (19 mm).

FEATURES

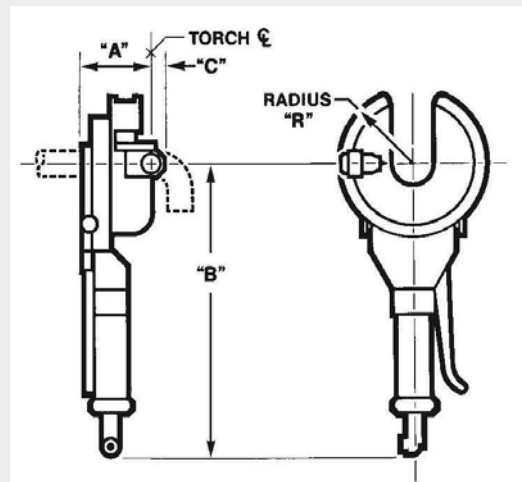
- Arc Voltage Control (AVC) for precise arc gap control.
- Programmable oscillation and precision wire feeder with wire guide positioned.
- Integral clamping system with the ability to adjust for different pipe and tubing diameters in seconds.
- Clamping mechanism allows automatic centering of the weld head on the pipe.
- Water cooled torch for 100% Duty Cycle operation.



DIMENSIONS

Weld Head Model #	Tube/Pipe OD Range	Dimensions			
		A	B	C	R
79-2375	0.75" - 2.375" 19 mm - 61 mm	4.50" * 114 mm	16.25" 413 mm	0.63" 16 mm	3.43" 87 mm
79-3500	1.00" - 3.50" 25 mm - 90 mm	4.50" * 114 mm	19.25" 490 mm	0.63" 16 mm	4.25" 108 mm
79-4500	1.90" - 4.50" 48 mm - 114 mm	4.50" * 114 mm	19.25" 490 mm	0.63" 16 mm	5.25" 133 mm
79-6625	2.00" - 6.625" 50 mm - 170 mm	4.50" * 114 mm	19.25" 490 mm	0.63" 16 mm	6.31" 160 mm

* with cross-seam “in” all the way



www.arcmachines.com

sales@arcmachines.com

MODEL 79 SERIES FULL-FUNCTION WELD HEADS

The Model 79 series is compatible with a variety of joint designs such as "J" prep and square butt, and will weld materials ranging from stainless or carbon steels to exotic alloys such as Hastelloy,™ Inconel,™ and Monel,™ as well as all other TIG weldable materials.

TECHNICAL SPECS



	Model 79-2375	Model 79-3500	Model 79-4500	Model 79-6625
Tube/Pipe OD	0.75" - 2.375" (19 mm - 61 mm)	1.00" - 3.50" (25 mm - 90 mm)	1.90" - 4.50" (48 mm - 114 mm)	2.00" - 6.625" (50 mm - 170 mm)
Wall Thickness	up to 0.44" (11 mm)	up to .044" (11 mm)	up to 0.675" (17 mm)	up to 0.75" (19 mm)
Rotation Speed	0.1 - 5.0 RPM	0.05 - 2.0 RPM	0.05 - 2.0 RPM	0.05 - 2.0 RPM
Torch Adjustments lead / lag cross-seam tilt in / tilt out	+/- 5° +/- 0.25" (6,35 mm) 15° / 45°	+/- 10° +/- 0.375" (9,53 mm) 15° / 45°	+/- 10° +/- 0.375" (9,53 mm) 15° / 45°	+/- 10° +/- 0.375" (9,53 mm) 15° / 45°
Wire Feeder	Integral, cable-mounted 5 - 100 IPM	On-board 5 - 100 IPM	On-board 5 - 100 IPM	On-board 5 - 100 IPM
Wire Spool Size	2 lbs., 4" standard spool (0,9 kg, 101,6 mm)	Low-profile standard 2 lbs., (4") optional spool	2 lbs., 4" standard spool (0,9 kg, 101,6 mm)	2 lbs., 4" standard spool (0,9 kg, 101,6 mm)
Filler Wire Size	0.030" or 0.035" (0,762 mm or 0,889 mm)	0.030" or 0.035" (0,762 mm or 0,889 mm)	0.030" or 0.035" (0,762 mm or 0,889 mm)	0.030" or 0.035" (0,762 mm or 0,889 mm)
Weight (less cables)	11 lbs. (5 kg)	14 lbs. (6,35 kg)	16 lbs. (7,25 kg)	22 lbs. (10 kg)
Torch (water-cooled)	200A continuous Duty Cycle	200A continuous Duty Cycle	200A continuous Duty Cycle	200A continuous Duty Cycle

Compatible Power Supplies: Model 227 and Model 415

Leaders & Innovators in

Automated Orbital Welding

For further information please visit our website
or contact us at 1-818-896-9556



AMI
ARC MACHINES, INC.®

www.arcmachines.com

sales@arcmachines.com

HEADQUARTERS
Arc Machines, Inc.

10500 Orbital Way
Pacoima, CA 91331 U.S.A.
Tel: +1 / 818 / 896 / 9556
Fax: +1 / 818 / 890 / 3724
sales@arcmachines.com

EUROPEAN BRANCH OFFICE
Arc Machines, Inc.

Chemin du Lavasson 2, CH-1196
Gland, Switzerland
Tel: +41 / 22 / 995 / 0051
Fax: +41 / 22 / 995 / 0059
sales@arcmachines.ch

GERMAN OFFICE
Arc Machines GmbH

Markelsbach 2
D-53804 Much, Germany
Tel: +49 / 2245 / 91680
Fax: +49 / 2245 / 916868
sales@arcmachines.de

UK OFFICE

Arc Machines UK Limited
Unit 2 Lampport Court
Heartlands Business Park
Daventry, NN11 8UF, UK
Tel: +44 / 1327 / 312787
Fax: +44 / 1327 / 315034
sales@arcmachines.co.uk